

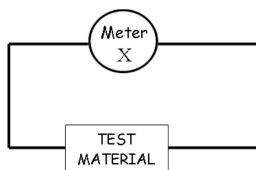
## Revision Quiz

Name that Meter

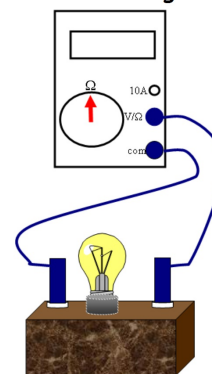


Which terminal is always used on a multimeter?

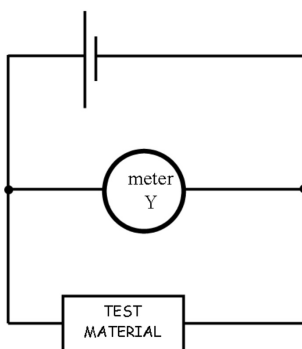
## Name Meter X



What is this circuit being used to find?



## Name meter Y



Draw the circuit symbols for

- (a) a battery,
- (b) fuse,
- (c) lamp,
- (d) resistor,
- (e) cell,
- (f) bell,
- (g) variable resistor.

- (a) What is a conductor?
- (b) Name 3 conducting materials
- (c) How does a conductor differ from an insulator?
- (c) Describe what an electric current is.

What units are used in measurement of

- (a) current
- (b) voltage
- (c) resistance

<http://www.bbc.co.uk/bitesize/quiz/q74171589>

<http://www.bbc.co.uk/education/guides/z437hyc/test>

<http://www.bbc.co.uk/education/guides/zk37hyc/test>

<http://www.bbc.co.uk/education/guides/z9b2pv4/test/answers?question1=a&question2=b&question3=a&question4=c&question5=b&question6=a&question7=b&question8=a&question9=a&question10=b&question11=c>

#### DEFINITIONS

1. is a measure of how difficult it is for a current to move through an object
2. the electrical push that allows charge to flow
3. the quantity of unbalanced positive or negative ions in or on an object
4. electrons passing through a circuit
5. a meter to measure many different electrical quantities
6. a meter to measure resistance
7. a meter to measure voltage
8. a meter to measure current

9. a complete path for the current to follow
10. the push that makes the charges move around a circuit
11. a material that electricity can't pass through
12. a material that electricity can pass through
13. heat, light, magnetism and chemical effects
14. A circuit to test whether something is a conductor or an insulator, or to find faults in circuits
15. a circuit with more than one path for the current to follow
16. a circuit with only one path for the current to follow

#### MORE METER QUESTIONS

- 1) Which meter mustn't be plugged in with a power supply?
- 2) Which meter goes in parallel?
- 3) Which meter goes in series?