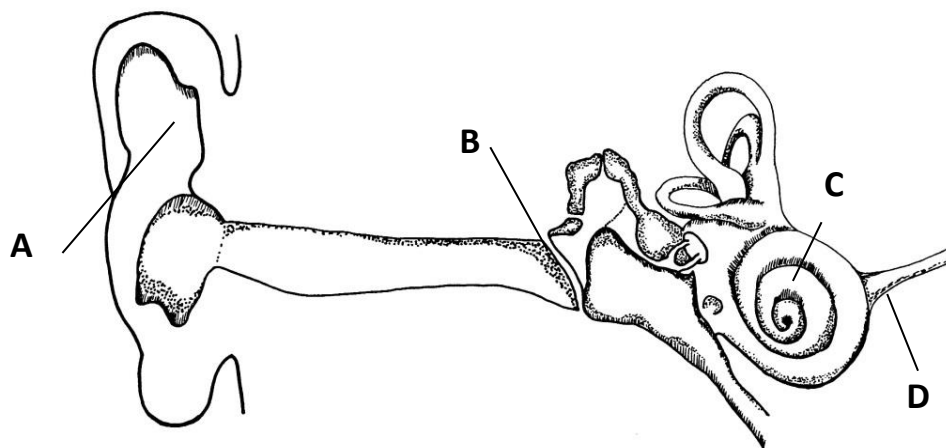

Question

- 1 Energy is measured in a unit called
- 2 Energy of movement is called
- 3 Stored energy is called and comes in different forms.
- 4 energy is stored in a cell or battery.
- 5 stored in a spring
- 6 potential energy is stored in objects at height.
- 7 I get my energy from my

8 State the main energy change that takes place in a torch

9 State the main energy change that takes place in a catapult

10 We say there is an energy crisis but there is the same amount of energy now as there was a hundred years ago. What has happened to a lot of our energy?



11

12 State the range of human hearing

13 Some sounds can permanently damage hearing. What sound level is considered to be the danger level?

14 The name for the top of a wave

15 The name for the bottom of a wave

16 The middle to the top of the wave

16

17 the distance between to same points on successive waves

18 what two things are required to measure the speed of a wave

19 sound can travel through

20 sound cannot travel through

21 Sound travels 680 m through air in 2 s. What is the speed of sound?

22 A runner runs 200 m in 40 s. Calculate the speed of the runner

23 What happens when air is removed from a bell jar containing a ringing bell

24 Loud, high pitched

25 Quiet high pitched

26 Loud, low pitched

27 Quiet low pitched

28 When the particles move back and forwards in the direction of the wave

29 When the particles move up and down in the direction of the wave

30 pitch in sound relates to....

31 volume in sound relates to

Match the correct answer

JOULE .

20-20,000 Hz

340 m/s

5 m/s

85 dB

amplitude

amplitude of a wave

BECOMES LESS USEFUL FORMS (1), ESPECIALLY HEAT (1)

WASTED 1 MARK ONLY

CHEMICAL

crest

CHEMICAL (POTENTIAL) \Rightarrow ELECTRICAL \Rightarrow LIGHT +
(HEAT)
(NOT ELECTRICITY OR ELECTRIC)

distance and time

ELASTIC /STRAIN \neq KINETIC + (HEAT OR SOUND)

ELASTIC/STRAIN

FOOD

frequency of a wave

GRAVITATIONAL

it gets quieter and quieter until it can't be heard.

KINETIC energy.

Longitudinal waves

POTENTIAL energy

solids, liquids and gases

Transverse waves

trough

vacuum

wavelength

Which letter
Auditory Nerve, Cochlea, Ear Drum, Pinna,
