

Sideways skid marks made by Car B

Front wheel skid mark Car A

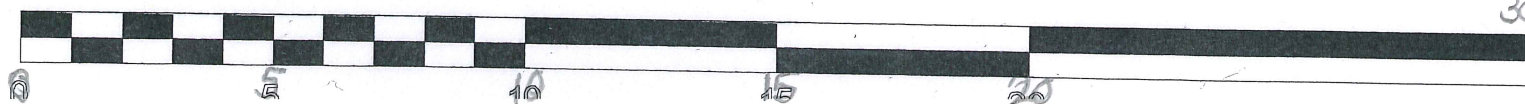
Front wheel skid mark of Car A
after collision with Car B

Car B pulls out into the path of car A.

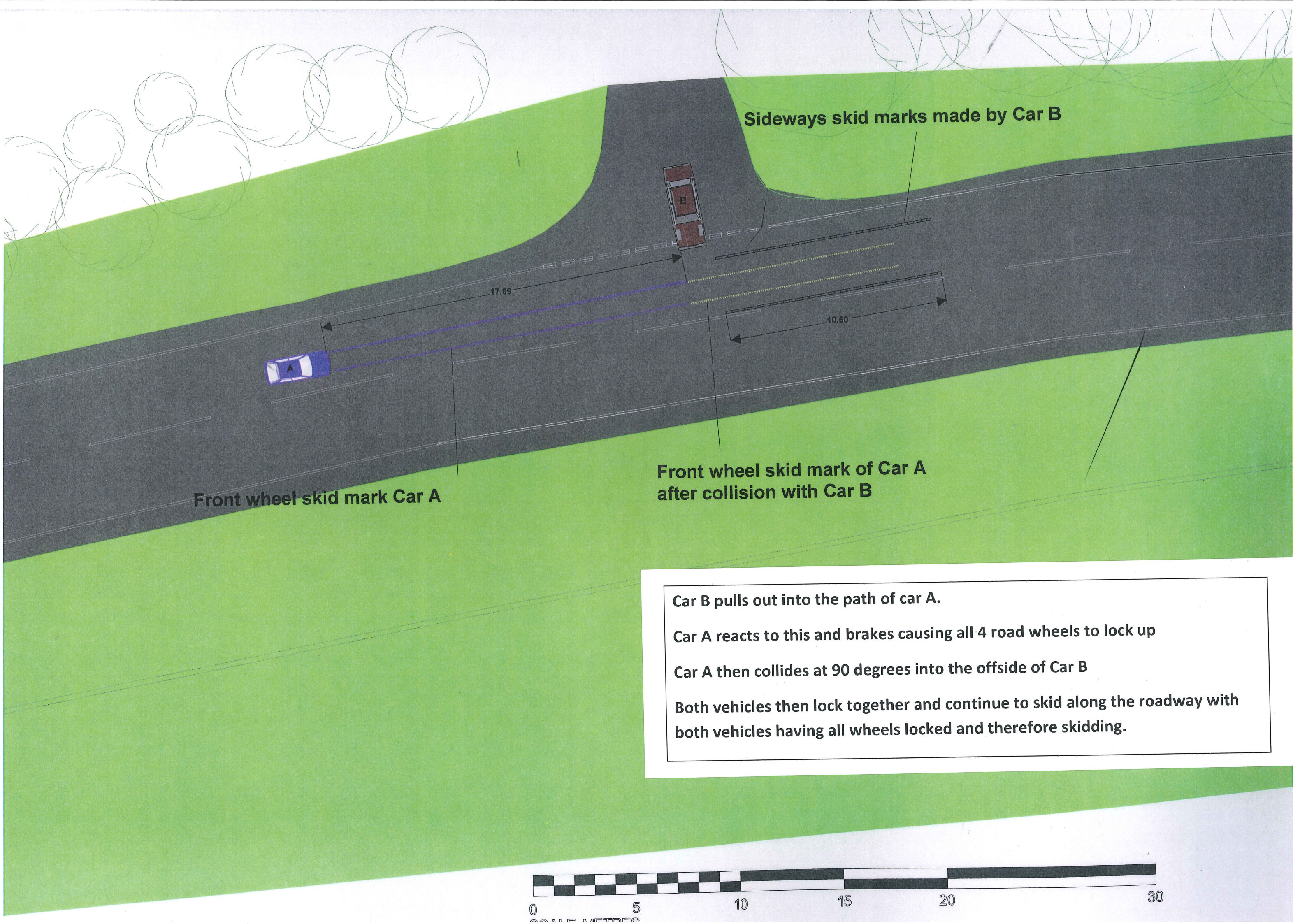
Car A reacts to this and brakes causing all 4 road wheels to lock up.

Car A then collides at 90 degrees into the offside of Car B.

**Both vehicles then lock together and continue to skid along the roadway
with both vehicles having all wheels locked and therefore skidding.**



30 metres

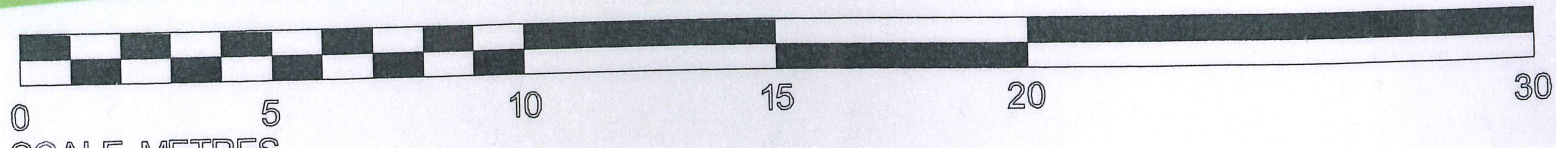


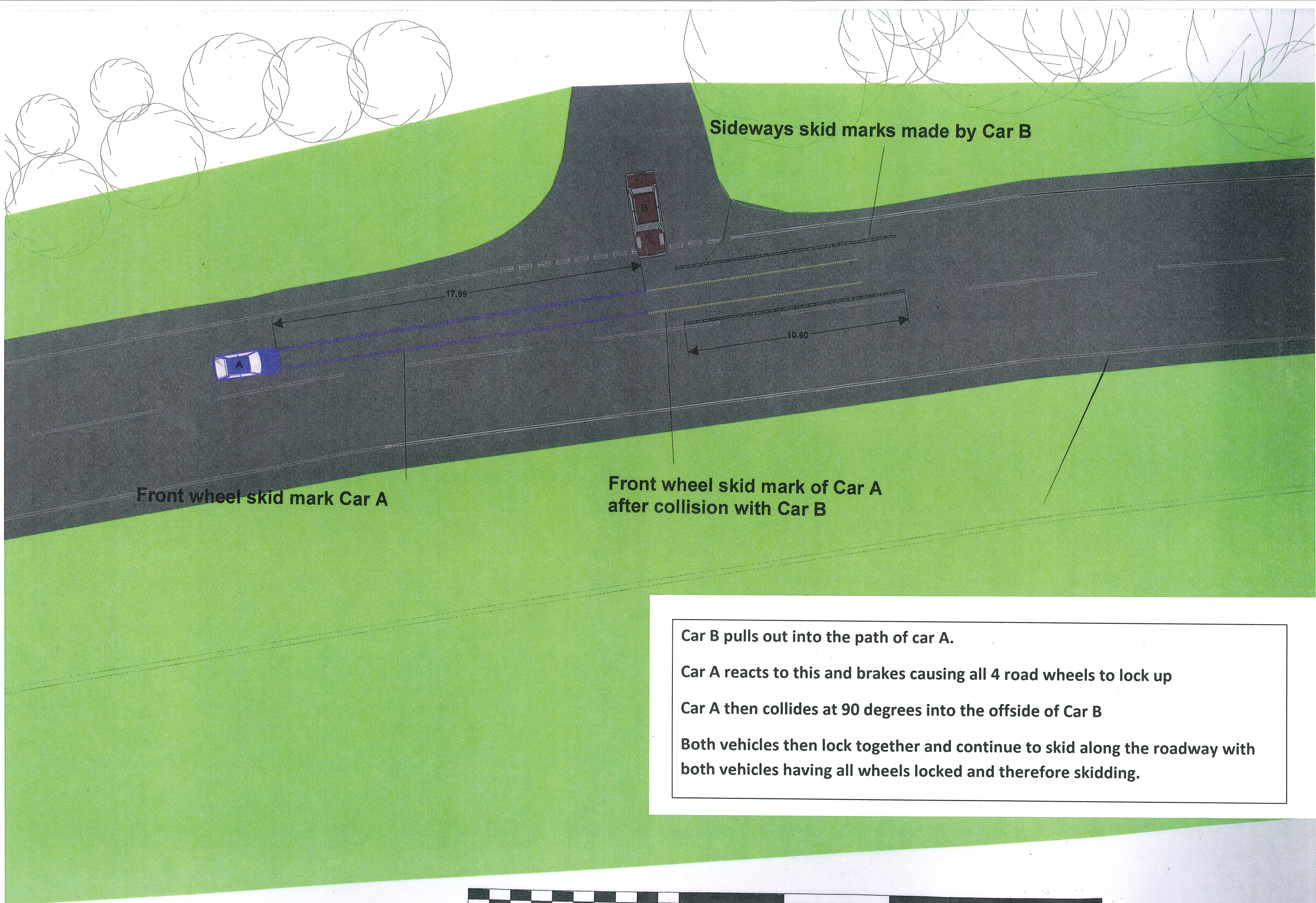
Front wheel skid mark Car A

Front wheel skid mark of Car A
after collision with Car B

Sideways skid marks made by Car B

Car B pulls out into the path of car A.
Car A reacts to this and brakes causing all 4 road wheels to lock up
Car A then collides at 90 degrees into the offside of Car B
Both vehicles then lock together and continue to skid along the roadway with
both vehicles having all wheels locked and therefore skidding.





Front wheel skid mark Car A

Front wheel skid mark of Car A
after collision with Car B

Sideways skid marks made by Car B

Car B pulls out into the path of car A.

Car A reacts to this and brakes causing all 4 road wheels to lock up

Car A then collides at 90 degrees into the offside of Car B

Both vehicles then lock together and continue to skid along the roadway with
both vehicles having all wheels locked and therefore skidding.

